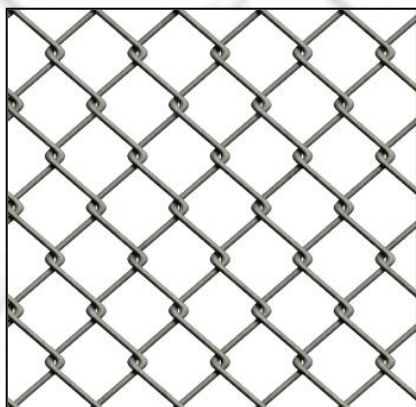


Arm-R-Lite Door Manufacturing Co., Inc.

Chain Link and Mesh Screen Overhead Sectional

Security Doors

*Exclusively Welded Aluminum Frames



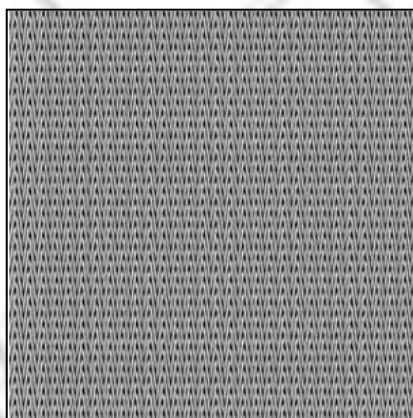
Chain link options are available to meet a large array of air space requirements for different applications.

Chain link offers the highest visibility in security conscious environments.

Chain link upward-acting security door

Mesh screens available to meet Federal Specifications STD A-A-1037B for security doors and food applications.

Mesh screen security doors are effective for addressing bug and vermin infestations as well as curb theft.



Mesh screen upward-acting security door

Suggested Applications:

- Food and product warehouses
- Food production facilities
- Agricultural storage locations
- Health and medicinal products warehouses
- Cosmetics and chemical storage
- Paper mills
- Distribution centers
- Parking garages
- Correction facility sally ports
- Laboratories and research facilities
- Infestation prone facilities by either bugs or vermin
- Structures requiring added security features or theft deterrents.

Arm-R-Lite Door Manufacturing Co., Inc.

40 Colonial Drive
Piscataway, NJ 08854

SPECIFICATIONS: up to 30'2" wide

<u>RAILS AND STILES:</u>	.075 - .085
Extruded 6063-T6 Alloy,	1 3/4" thick
Bottom Rail	4 1/2", 7 1/2"- tapered or sloping
Top Rail	4 1/2", 7 1/2"
Meeting Rails	3 7/8" wide per pair
End Stiles	3 3/8", 4 1/2", 7 1/2" wide
Center Stiles	3 3/8" wide

NOTE: all dimensions include beading

FABRICATION:

By concealed heli-arc welding -**20 YEAR WELDED ALUMINUM FRAME WARRANTY**- except for top sections when trolley operated.

FINISH: Anodized per Aluminum association number A-21 – custom finishes available. **20 year warranty on clear anodized finish, dark bronze and Duranars®. 1 year warranty on powder coats.**

PANELS: Chain link, wire mesh, or security screen panels to meet project code and air space requirements.

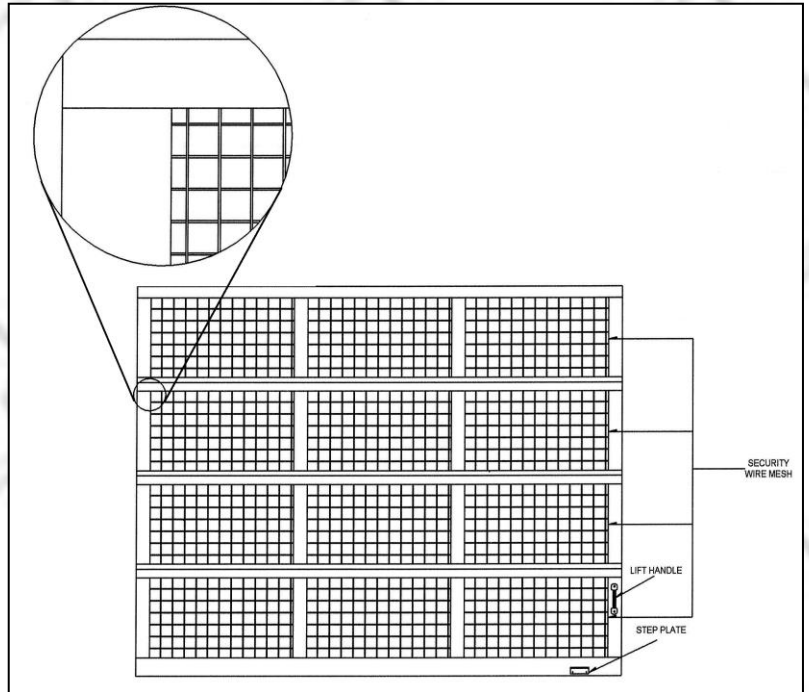
GLASS: Impact and safety glazing is available – consult factory.

ASTRAGAL: Vinyl astragal is standard on all door bottoms.

TRACK: Arm-R-Tite 2" x .083 galvanized steel or 3" x .109 galvanized as indicated, Horizontal tracks curved on a 15", 20" or 32" radius, high lift, vertical lift. Vertical tracks bracket or angle mounted.

SPRINGS: Torsion springs on a continuous ball bearing cross header shaft are standard. Hollow shaft is standard. Solid shaft available

HARDWARE: Hinges are 13' gauge tubular type galvanized steel with roller carrier incorporated in hinge. End hinges and the center hinges are secured with specially "designed" 1/4" self tapping screws. Rollers are heavy duty cadmium plated steel ball bearing rollers with hardened inner and outer race. **ALL SECTIONS ARE DRILLED FOR HINGES**



Wire Mesh Screen Security Door Exterior Elevation

LOCKING: End stile lock, inside locking only is standard. Other arrangements available. All locks to be field drilled.

OPTIONS:

- Pedestrian Pass Door within overhead door (with and without step over).
- Sloping bottom rails
- Matching entrance doors and gates are also available.
- High cycle springs
- Outside hood cover for exterior mounted doors
- High-lift, standard, and vertical lift track options available. Consult factory regarding low-headroom applications.

Arm-R-Lite Door Manufacturing Co., Inc.
40 Colonial Drive
Piscataway, NJ 08854